

to make the red
plantashrimp
golden letters as
limbs letters as
stomata letters as
letters limbs as
stomata as letters
experience now
making shrimp into
limbmouhths

Plantashrimp remembers walking home with a
pale blue fish *plantashrimp* rides its bicycle
through the rain *plantashrimp* changes its mind
into a *lungroom*

A shrimpglim
is not a
fields mound of
(Aphid). (Aphid).
a shrimp is
not (Aphid). mou
ecto and endo
bacteria

shrimp is not
shrimp is not

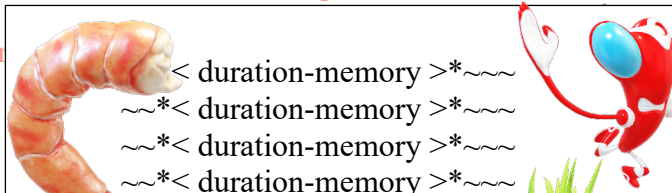
mound of sugar.
A shrimpglimmering, fields
is not a glimmering,
fields mound of (Aphid).
(Aphid). (Aphid). (Aphid).
a shrimp is
not (Aphid). mound of

mound of sugar.

a shrimp is not

A shrimpglimmering, fields

a shrimp is

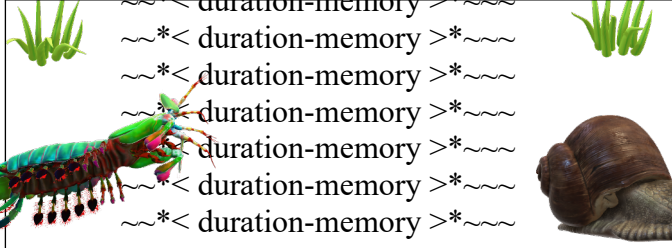


shrimp is not
shrimp is not



@xxxxxxx
xxxxxxxxxx
A red
me xxxxxx
xxxxxxxxxx
xxxx@
@xxxxxxxx
xxxxxxxxxx
xxx a Me
xxxxxxxxxx
xxxxxxxxxx
xxxx@
@xxxxxxxx
xxxxxxxxxx
xxx Yes xx
xxxxxxxxxx
xxxx@
@xxxxxxxx
xxxxxxxxxx
xxxx Redm
e xxxxxxxx
xxxxxxxxxx
xx@xxxxx

PLANTASHRIMP
A Shrimp Is Not a Mound of Sugar



d of sugar.
shrimpglimmering, fields
not a glimmering,
mound of (Aphid).
d). (Aphid). (Aphid).
shrimp is
hd). mound of
na endo

not

A shrimpglimmering, fields
is not a glimmering,
fields mound of (Aphid).
(Aphid). (Aphid). (Aphid).

bacteria

not

a shrimp is
not (Aphid). mound of

not

mou

ecto and endo

A shrimpglimmering, fields
is not a glimmering,
fields mound of (Aphid).
(Aphid).

bacteria

P1, P2, P3
on a *glyphgraph*
seemed like
lovely invitations
to a wedding

a shrimp is

a shrimp is not

glimmering,
mound of (Aphid).

not

a shrimp is not

(Aphid). (Aphid). (Aphid).

Plantashrimp



Plantashrimp doesn't always know how to respond to its name it doesn't know what to do with *plantashrimp* it's not important that its perception misses things or that when *plantashrimp* doesn't know how to respond *plantashrimp* exists as a small duration we cannot know *plantashrimp* is a systolic object you can say with your mouth saying it will necessitate autonomy *Plantashrimp* then surrenders that autonomy to the neurotic institution of *plantsocieties* imagine an orange goes into an hour and sees identical pictures of a moose on the wall each picture of the moose staring back at the orange that's an example of *plantashrimp's* neurotic institution of *plantsocieties* a formal mechanism of responsibility to action *Plantashrimp's* flexibility and inflexibility in decision making involve these actions but so does the general orientation of *plantashrimp's* anatomy its cells produce sugar then just crawl across the field>*~>*~>*~ P
lantashrimp organs are made up of cells***its planes are made of up of organs~~~~~its body is made up of planes>>>>an organ cannot be substituted no matter the circumstances



plunged in estuary, thick green non-conductive gel

i don't need my skulllll, touch of

conceptual shrimp on neuron

I-the-me- at thrown open humansenses, shrug and then hug tightly, closing my eyes to cinch the room shut as that difference bursts within me

I-the-I-enjoy/am— wantWant-for-sadnessake-I-the-amwere, Although the glimmering, prickling visual-tactile-auditory-olfactory fields can be peeled away, the perspective remains: a dense knot of objectless emotions the shrimp then unties revealing a luminous shell of bare self-awareness: duration-memory. The perspective can then be re-formed, or re-grown, into other fields, taking on the forms of different animal minds.

Piles of cognition tissue spire from the duration core like daubed mud. The possibility space of experience grows, subsuming the human as one small segment within its larger manifold.

De-formation of experience,

It is through the composite that transformations and glidings along seams can take place. For instance, ~#•<<<£*¥>>>•#~ the unreadability of this

er fields

to prove that feeling exists

the I-me-it and the you-we-of

conveying the future of our skulls

you are asking me to invent the fish

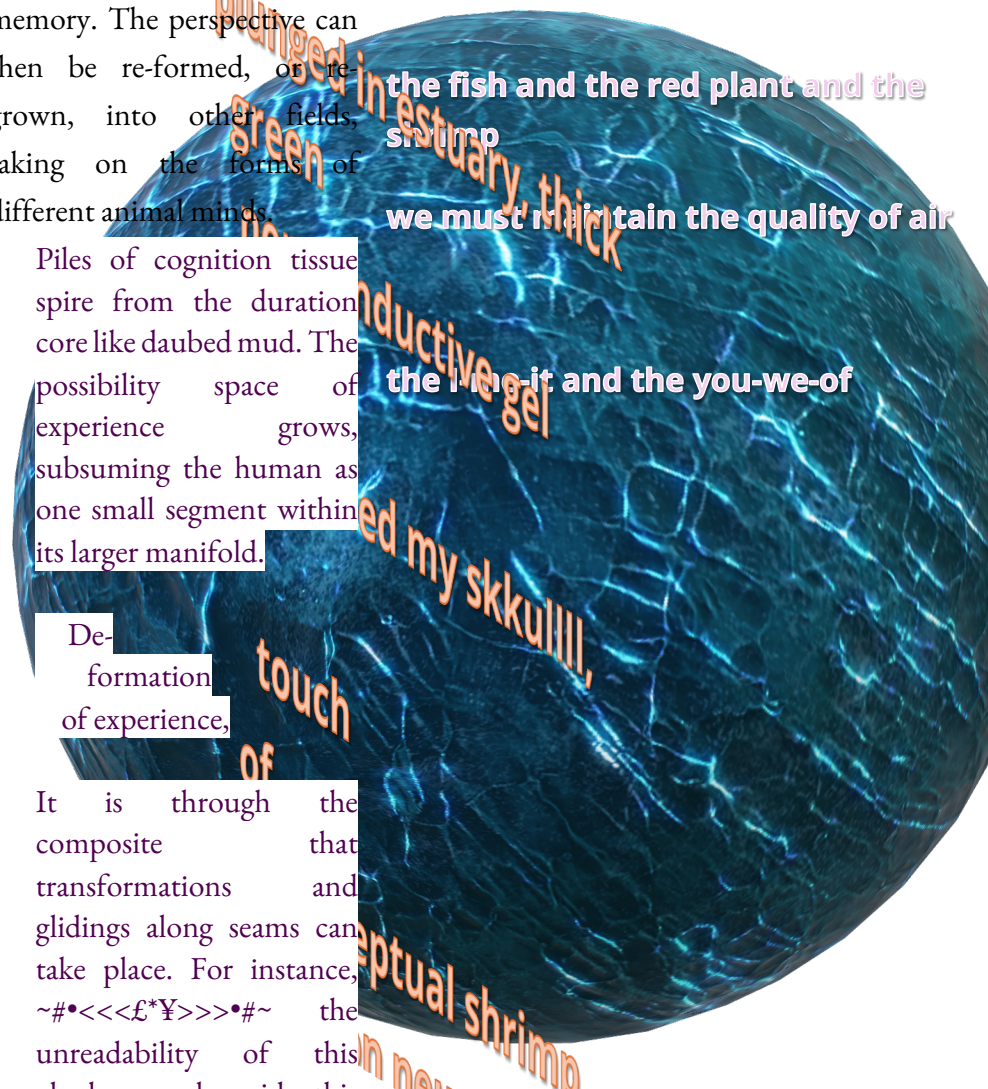
a few days before you asked me to

the fish and the red plant and the shrimp

we must maintain the quality of air

the I-me-it and the you-we-of

glimmering fields



plunged in estuary, thick green non-conductive gel

touch of

conceptual shrimp on neuron

~#•<<<£*¥>>>•#~

gypnigram alongside this conceptual articulation f=^*orms a whole with elements that exist outside intelligent understanding, yet which still exist.

So, perhaps, back at that bare duration of self-awareness, the schrimp claws crack even this brute unawareness open and peel back further layers. Finally we come to...or perhaps there is no finally. Nevertheless, what we have is being, the fact of existing.

Deformed to bare existence, perspective is nonetheless you, or me, or anyone this operation is performed on. Memory fizzes away. Yet I-you-anyone, the core relativity that memory transported within itself, remain.

Unexperienced experience. Un-conscious experience. Will the mind become locked in the grip of a non-concept— “experience that is not experienced”? —Only if it does not follow the procedure outlined above. Allowing the

existence, that perspective is nonetheless you, or me, or anyone this operation is performed on. Memory fizzes away. Yet I-you-anyone, the core relativity that memory transported within itself, remain.

Unexperienced experience.

Un-conscious experience. Will the mind become locked in the grip of a non-concept— “experience that is not experienced”? —Only if it does not follow the procedure outlined above. Allowing the conceptual schrimp to clean you down to the brain's gums, to pulped existence, shows you how far there is yet to unravel.

Am the

. Allowing the conceptual schrimp to clean you down to the brain's gums, to pulped existence, shows you how far there is yet to unravel.

Am the was-unremembered sleep. Z

3==rimpsh// * \ / * > ~ ' ' <

3==rimpsh// * \ / * > ~ ' ' <

glimm

A shrimp is not a mound of sugar

Everything in the tank happens to produce sugar all the time the mound is a series of durations *plantmospheres* as images of the tank is a series of passages transitioning from formal intention to formal

intention state to state each passage provides the possibility of a qualitatively new rich inner experience and each experience leads to another quantitatively novel passage the mound is essentially heavy getting more or less heavier as we speak the weight of

configurecognition attempts to perform getting to know the passage



hi hi hi I am shrimp passage and shrimp
will clean glass providing waste for the roots
now imagine my mouths speaking inside

shrimp and passage shrimp im E ha ha ha
raats the for waste provide glass clean wall
onside spiking meaths my emigine new

a circle as shrimp cleans the glass calcium lickilspam glass the clans shrimp as corcle a
for the roots it is through the composite of handshinds if camposite the thru thru as it riits the far
figuring shrimp's making calcium bringing the air inon air the bringalong lickcalcium tastemaking shrimp

that transformations and glidings along seem sing along glidilings end transfarmitins thots
to take place for instance shrimp is cleaning cleaning cleaning cleaning is shrimp far essence
glass both above and below water as mouthsmiths my is wetar blue and ibive aboth glass

act as appendages going carefully in conjunctioncanjinxsun in carefully going ippandages is oct
with the heart going wherever the heart wants went heart tho wherever going heart tho wath
a shadow that won't leave us alone i shodaw leave went live as *gluss*

now that passage is over
bye bye shrimp will now be
a witness to the sound of
zoah! shrimp will live on
gluss until told it must hay
down for the zoah! shrimp
must find testimonies of
life beyond the zoah! water
shrimp thinks shrimp does
not have to poop for the
rootsies shrimp has to
poopies for the rootsies
zoah! if only shrimp
believed that a crystal flake
was a crystal flake it would

zoah! now know how to
spend tank time perhaps
grief is the transposition
that allows shrimp to move
between states of mound
and to move according to
the durations of sugar
because shrimp makes
sugar into a mound of sugar
every time however if we
are to find some baseline
for the
plantashrimperience then
we need to begin by
delineating the privilege of

shrimp science so the
shrimp can understand that
all beings work to produce
sugar our lives are a state of
new durations calcium
carbonate processes and
breaks down microbes in
the water soluble forms of
calcium and nitrogen the
roots take up and combine
with carbon to produce
glowing chlorophyll zoah!
sugar is the singular
carbohydrate that provides
life

~~*< duration-memory >*~~

We must slow down to define what a shrimp is and the creative act that goes into *shrimpmaking*. Interacting with other self-serving agents who themselves are struggling for recognition constitutes the interpersonal *shrimpmaking plantashrimperience*, a dialogic encounter, in which two or more objects entertain the desire to understand one another and, in turn, understand themselves. In the context of our psychology, this specifically adaptive form of “desire” emerges from basic causal and intentional states aimed at satisfying the shrimp’s survival needs — the *conatus*, the carnal or appetitive striving—and eventually gives way to shrimp languages and shrimp cultures. Remember, “hi hi hi”? Yes. We can see in the shrimp’s desire system the beginning of emergence, how a biology gives way to *shrimpification*, how cognition gives way to *shreason* in the form of *shrimpgnition*, how individual intentionality gives way to a *shrared* intentional self, a collective *shrimp-shramp* identity. Recognition is an

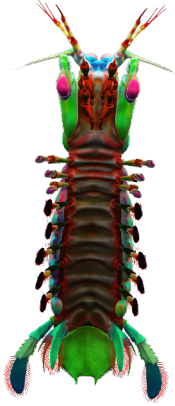
achievement of the shrimp's evolutionary development, the emergent situation of otherness, constituting a qualitative difference in its cognition, where cognition proper, the ground of shared intentions, is primarily consumed by the kind of narcissistic drives which seek immediate satisfaction. Then, what constitutes *shrimpgnition*, in the end, is a shrimp's ability to mediate those biological drives for the sake of understanding the *shrimptentions* of other shrimp, suggesting that mutuality is a collaborative act with the aim of preserving the shrimp shared dynamic. However, before there are joint goals, there is first individual intentionality, which has about it selective and adaptive goal-states aimed at ensuring the shrimp's survival. We might say, for the sake of avoiding confusion and to remain up to par, so to speak, with the normative associations that accompany the history of the words, *shrimpification*, *shrimpgnition*, and *shreason*, that recognition involves, before all else, cognizance. It remains true, that the scheme of mutual *shrimpgnition* is predicated on the ground of an integral struggle for the life and desire of shrimp, the reality-denying conatus, even at the expense of mutuality. My

scheme for shrimpgnition accounts for the transition from first to second nature, that is, from the kind of apprehension that remains a particular form of cognition as only a biological necessity for shrimp survival and for the replication of *shrimp-shramp's* gene pool, an adaptive specialization—*shrimpgnition*—to the specific form of mutual *shrimpgnition*, which involves what could be called *shrimpfarming* but is rather a unique form of shrimp society — interpersonal encounters directed towards achieving shared shrimpy goals. The latter involves not only a joint-shrimp-identity but, too, a reciprocal-intentional self that works to decenter inherent narcissistic tendencies in individual shrimp for the sake of shared aims. I will continue to define each stage of the shrimp's life, how each cell, organ, plant, and *shrimpody* emerges as an independent component from its prior condition.

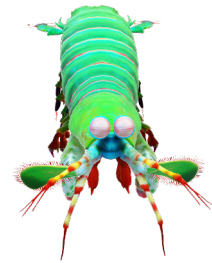
THE
PLANTSHMOSPHERE

HI HI HI I AM SHRAMP'S PASSAGE
AND SHRAMP HA HA HA HERE TO CLEAN
GLHASS AND PROVIDE WASTE FOR THE RAATS
NOW ENGINE MY MOUTH INSIDE
A CORCLE AS SHRAMP
CLEANS GLHASS PROVIDING LICKCALCIUM
GLUSS GHLASS A CORCLE
TO THE ROOTS IT IS THRU
THE COMPOSITE OF HANDS
OF THE SHRIMP'S TASTEMAKING
BRINGING THE AIR IN ON AIR
THAT TRANSFORMATIONS AND GLIDINGS ALONG
SING TO TAKE PLACE FOR AMPLE
SHRAMP IS CLEANING FAR ESSENCE
GLHASS ABIVI AND BULUW WATER
AS MY MOUTH WETAR BLUE GLHASS
ACTS AS APPENDAGE GOING
IN CONJUNCTION OCTOBER
GOING WHEREVER THE HEART WANTS
HEART WHEREVER YOU GOING
A SHADOW THAT WON'T LEAVE AS ALONE

(Aphid). (Aphid). (Aphid).



To delineate certain proto-cognitive, intentional states which accompany individual organisms, mainly certain arthropods and most mammals, I will employ the idiom, “adaptive specializations,” which I have taken from Michael Tomasello’s *The Evolution of Agency: from Lizards to Humans* (2022) and *A Natural History of Human Thinking* (2014). These specializations are the *protological* features, by which the shrimp receives external information and reacts in a functional, self-regulating manner—in a way that will contribute to both the fulfillment of its biological needs and the preservation of its life. One might compare these specializations to other physiological processes such as homeostatic regulation of blood sugar and body temperatures in mammals. They denote, in general, proprioceptive processes and are not merely reflexes but possess the capacity to generate and integrate a wide range of environmental circumstances into their goal states and to create an intention that allows them to act in a particular way. The adaptive specializations of shrimp are cognizant of the



local environmental context and of essential, individual intentions for bringing about acts of survival. They are cognizant (apprehension) but not cognitive yet. At this level of cognizance, 'desire' is limited to the shrimp's built-in needs, where intentionality is aimed at only necessary biological actions. *Shrimp-shramp's* adaptive specializations are the defining features of its cognizance and constitute the medium of shrimp's individual intentionality. What defines *shrimpgnition* before cognition and thinking per se is the shrimp's ability to act on certain intentions and goal-states in an inflexible or stereotypic manner. The shrimp's inflexibility is not cognitive because it is not reflective (there is almost no epistemic connection to the world, no belief in the casual and intentional states of relative events), except when it is concurrently raining. In building the tank as a local ecological context, perceived situations and behavioral possibilities remain restricted to the demands of the shrimp's regulatory processes for maintenance. The pressures and tensions of the shrimp's empty abdomen create a necessary intention of establishing the *gluss* to attract its prey, then to configure its reflection. As

Tomasello states, “an individual organism of this kind does not have the kind of casual or intentional understanding of the situation that would enable it to deal flexibly with ‘novel’ situations” (2014). The best anatomical parallel to our shrimp-shramp is the jumping spider. When the *Portia* spins its web, the complexity of its orbital network is not the product of simple stimulus-response linkages. “The process is too dynamic,” Tomasello states, “and dependent on local context” (2022). The spider’s desired situation is not only a means of capturing prey for food, but, too, a way of establishing a haven for both reproductive and digestive processes to carry out their genetic programs. The complexity of design in the web necessary correlates to this closed world of intentions: food, reproduction, and aggression. This account in control system terms is principally identical to the classic model of desire in rational-action philosophy: the jumping spider has the goal or desire to capture *A. appensa*, invariably the same situation it encountered in the past, and builds its web so as to bring about that intention in a particular way, navigating the local terrain accordingly to capture its prey and to set-

up reproductive conditions (Balda, Pepperberg, and Kamil, 1998). *Shrimp-shramps* perform deliberate acts of intentionality aimed at finding solutions to complex goal-states within their local ecological context of tanks. Such behaviors and actions of individual intentionality point to an organism still limited, perhaps, to correlative acts aimed at maintaining the tank. However, they do retain the special capacity to deliberate actions with the intention of achieving desired situations, particularly shared ones.

glimmering, fields

Lungroom: a historical broadcast

REDME

(*~*~*)(*~*~*)
(*~*~*)(*~*~*)
(*~*~*)(*~*~*)

A Shrimp is Not a Mound of Sugar

A blue light means PLANTASHRIMP is happy. The red light applies more pressure than that. Higher levels of radiant heat make PLANASHRIMP work more. Within its population, there are degrees of stress. However, in the botanical world, all stress comes from spectrums that live in between blue and red light. In the mornings, the tank absorbs the evening's humidity, a byproduct of transpiration, as the heat and the leaves take back the water in the air. All PLANTASHRIMP'S roots stretch at night, as water is released, along with small amounts of carbon. A tank responds to given spectrums of light where blue and red light represent the poles of tank temporality, its ability to continue breathing. Blue light promotes vegetative growth; red light promotes generative growth; light-based temporality is produced on both daily and annual scales, so tanks and PLANTASHRIMP are sustained across generations.

A shrimp is not a mound of sugar
everything happens in the tank all the time
the mound is a series of SHMOMENTS as the tank transpires to PASSAGE
the mound is heavy getting more or less heavier as we speak shrimp moves between mound and sugar because shrimp makes sugar into a mound every time.

I promise to make a rhythm that reveals SOON
I WILL DISSOLVE
showing my composition to be breezy wool and chemicals the red that makes purple appear more purple than the leaves the I-ME-IT and YOU-WE-OF
conveying our exoskeleton last night you asked me to invent a shrimp now the shrimp works diligently it maintains the air the submerged roots feel like they're getting somewhere we ARE getting somewhere do you hear that? I am the shrimp speaking today you will realize the dangers of wandering into everyone's business it is a question of responsibility how arthropods grow hungry HERE they await further instruction it is actually embarrassing to reveal SHRIMPSTONISHMENT
then its music then the opposite of whatever rhymes with Calabasas it has been a hidden pleasure talking to you GOODBYE

CONFIGURECOGNITION, or how to spend tank time: shrimp will live on glass until told it must hay
it finds many testimonies of life beyond the water shrimp thinks shrimp
does not have to poopsies for the rootsies if only it believed a crystal flake was a crystal flake



to make the red
plantashrimp
golden letters as
limbs letters as
stomata letters as
letters limbs as
stomata as letters
experience now
making shrimp into
limbmouths

Plantashrimp remembers walking home with a
pale blue fish *plantashrimp* rides its bicycle
through the rain *plantashrimp* changes its mind
into a *lungroom*

A shrimpglim
is not a
fields mound of
(Aphid). (Aphid).
a shrimp is
not (Aphid). mou
ecto and endo
bacteria

shrimp is not
shrimp is not

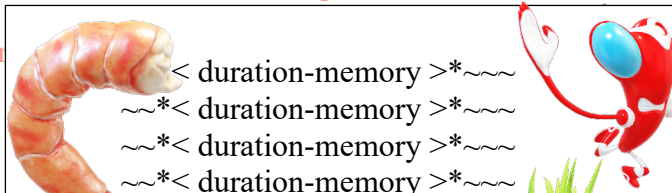
mound of sugar.
A shrimpglimmering, fields
is not a glimmering,
fields mound of (Aphid).
(Aphid). (Aphid). (Aphid).
a shrimp is
not (Aphid). mound of

mound of sugar.

a shrimp is not

A shrimpglimmering, fields

a shrimp is

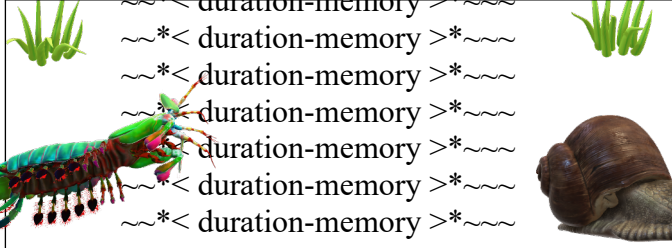


shrimp is not
shrimp is not



@XXXXXXXXX
XXXXXXXXXX
A red
me XXXXX
XXXXXXXXXX
XXXX@
@XXXXXXXXX
XXXXXXXXXX
xxx a Me
XXXXXXXXXX
XXXXXXXXXX
XXXX@
@XXXXXXXXX
XXXXXXXXXX
xxx Yes xx
XXXXXXXXXX
XXXX@
@XXXXXXXXX
XXXXXXXXXX
XXXX Redm
e XXXXXXXX
XXXXXXXXXX
XX@XXXXX

PLANTASHRIMP
A Shrimp Is Not a Mound of Sugar



d of sugar.
shrimpglimmering, fields
not a glimmering,
mound of (Aphid).
d). (Aphid). (Aphid).
shrimp is
hd). mound of
na endo

not

A shrimpglimmering, fields
is not a glimmering,
fields mound of (Aphid).
(Aphid). (Aphid). (Aphid).

bacteria

not

a shrimp is
not (Aphid). mound of

not

mou

ecto and endo

A shrimpglimmering, fields
is not a glimmering,
fields mound of (Aphid).
(Aphid).

bacteria

P1, P2, P3
on a *glyphgraph*
seemed like
lovely invitations
to a wedding

a

a shrimp is not

glimmering,
mound of (Aphid).

not

a shrimp is not

(Aphid). (Aphid). (Aphid).